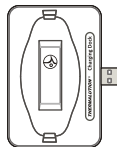


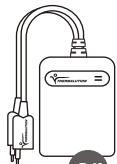
● Components & Specifications



Wireless charging dock

Model : SPE Type : 004-K

Input from SPE-004-J / SPE-004-L only



Battery Charger

Input : 12VDC / 1A

Model : SPE Type : 004-J(Black)●

Output : 8.4VDC / 0.5A x 2

or

Model : SPE Type : 004-L(Red)●

Output : 16.8VDC / 1.32A x 2

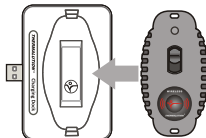
⚠ Warning !

Per medical device manufacturers in general, a minimum distance of 15.3 cm (6 inch) between any wireless device and an implanted medical device, such as a pacemaker or implanted cardioverter defibrillator, is recommended to avoid potential interference with the medical device. Thus, a person who has a medical device should follow his/her medical device manufacturer's directions and keep Thermalution's wireless device at a safe distance from the medical device.



● Attention ⚠

When charge the remote controller, please make sure the controller has been put on the charging duck in locking position, in order to achieve normal charging performance



PETATECH INTERNATIONAL CO., LTD.

6F., No.101, Zhouzi St., Neihu Dist., Taipei City 114, Taiwan R.O.C.

Tel : +886-2-8751-9998 Fax : +886-2-8751-6887

Contact : info@thermalution.com Visit : www.thermalution.com



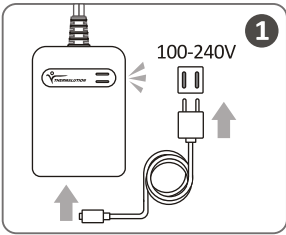
Wireless Charging Set

INSTRUCTION MANUAL

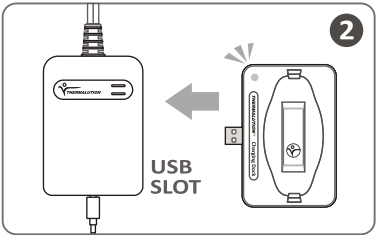


**For SPE-005-F
Rechargeable
Wireless Controller**

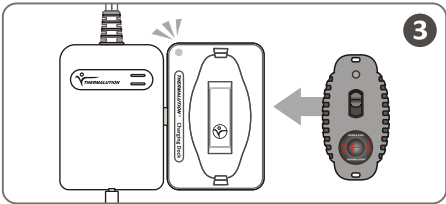
How to Connect the Wireless Charging Dock:



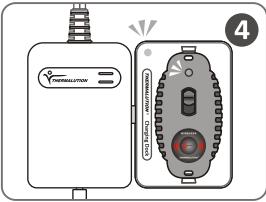
Connect the power adaptor to wall power, and the other end to the Battery Charger. The light indication on the Battery Charger will flash **red > orange > green > off** in sequence, as a self testing to indicate successful connection. Please wait for lights to goes off before connecting Charging Dock to the charger.



Connect the Charging Dock to USB connector on the Battery Charger. The light indication on the Charging Dock will be shown still red.



Remove the Forearm Strap from the Wireless Remote Controller, and place the Controller on top of the Charging Dock face up. Make sure there's nothing else between Controller and Charging Dock.



The Controller has started charging and the charging status light indicator will show:

- **Controller** : Red light
- **Charging Dock** : Green flash light
- **Battery Charger** : None

CHARGE STATUS	No-load	Charging	Charged
Controller	None	Red light	Green light
Charging Dock	Red light	Green light flash	
Battery Charger	None	None	None

Attention for Rechargeable Wireless Remote Controller

1. Please charge the Remote Controller after every dive.
2. When the battery of the Controller is low, the light indicator will flash twice every second.
3. Never charge the Wireless Controller under the sun, or anywhere close to heat.

Important Product Safety Information !

Please handle your Wireless Charging Dock and its accessories with care. The following suggestions will help you protect your product and its warranty coverage:

1. Read this manual before use and follow the instructions.
2. Do not store your product in dusty or dirty areas.
3. Do not store your product in high temperature area over degrees.
4. Do not store your product in cold temperatures area under degrees.
5. Do not attempt to open or alter your product as such action may damage the product and void the warranty.
6. Avoid rough handing of your product such as dropping, knocking, or shaking, as it may break the internal circuit boards or mechanics and void the warranty.

! Attention !

The product is partially magnetic and metallic materials may get attached to the product. Thus, do not place any bank cards or other magnetic storage media near the product to prevent stored data and information getting erased.